



Total Solution Provider in Saw Device

SL3020S

300MHz IF SAW Filter
23.55MHz Bandwidth
Revision 1: 29. Oct. 2007



- Electrical Characteristics
 - Package Dimensions
 - Testing Environment
 - Frequency Characteristics
-

SAWNICS Inc.

460 Cheonheung-ri, Seonggeo-eup, Cheonan-si, Chungcheongnam-do, 330-836 / Korea.
Tel: +82 41 550 9372 / Fax: +82 41 550 9399 / www.sawnics.com

□ Electrical Characteristics

Maximum Ratings

| Parameters Description | Unit | Minimum | Typical | Maximum |
|--|-----------------|---------|---------|---------|
| Operating Temperature Range | °C | -30 | - | 80 |
| Storage Temperature Range | °C | -40 | - | 85 |
| Maximum DC Voltage | V | - | - | 10 |
| Maximum Input Power | dBm | - | - | 10 |
| Source Impedance (single ended) ⁽¹⁾ | Ω | - | 50 | - |
| Load Impedance (single ended) ⁽¹⁾ | Ω | - | 50 | - |
| Package type & size | S | | | |
| Length x Width | mm ² | - | 7.0x5.0 | - |
| Height | mm | - | - | 1.6 |

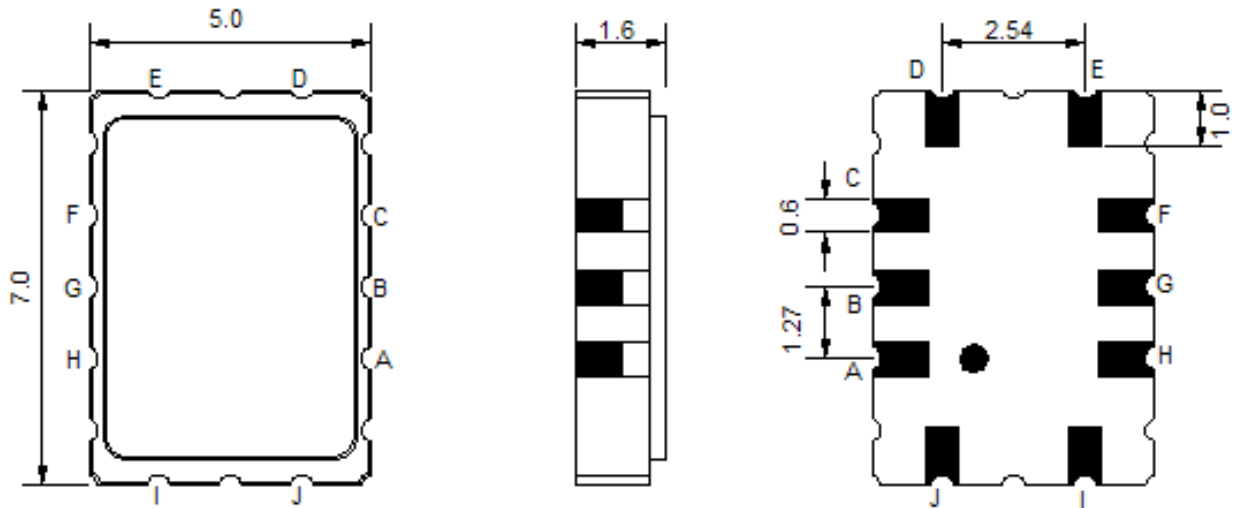
Electrical Specification

| Parameters Description | Unit | Minimum | Typical | Maximum |
|------------------------------|-------------------|---------|---------|---------|
| Center Frequency (Fo) | MHz | - | 300.0 | - |
| Insertion Loss at Fo | dB | - | 10.3 | 15.0 |
| Temperature Coefficient | ppm/°C | - | -86 | - |
| Amplitude Ripple Variation | dB _{p-p} | - | 0.7 | 1.5 |
| Group Delay Variation | nsec | - | 50 | 100 |
| Absolute Delay at Fo | µsec | - | 0.51 | 1.0 |
| Bandwidth at -1.0 dB | MHz | 20.0 | 21.95 | - |
| Bandwidth at -3.0 dB | MHz | 21.0 | 23.55 | - |
| Bandwidth at -40.0 dB | MHz | - | - | 31.0 |
| Relative Attenuation: | | | | |
| Lower sidelobe | dB | 40 | - | - |
| Upper sidelobe | dB | 40 | - | - |
| Ambient Temperature | °C | - | 25 | - |

Notes : (1) With Matching Network (Ref. Testing Environment Circuit as shown below).

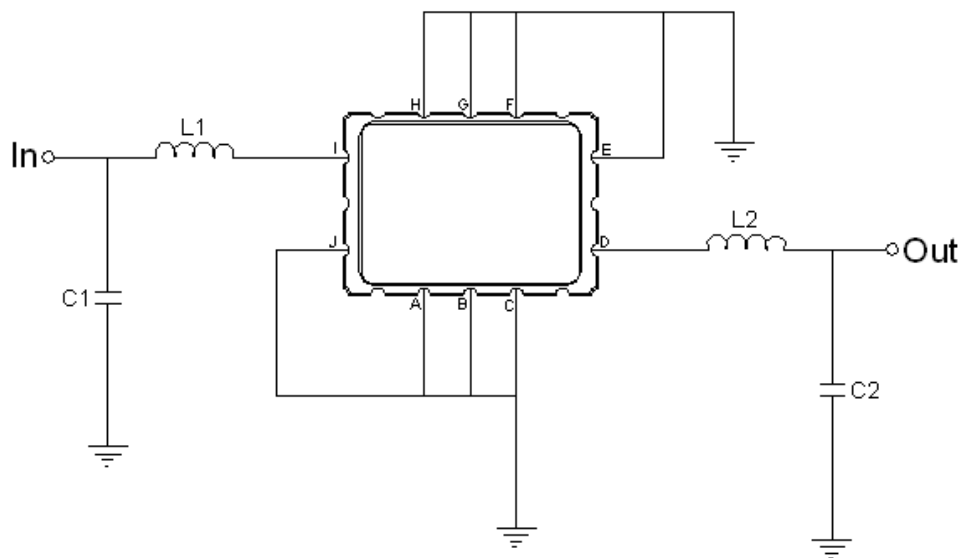
Those impedances could be modified with different impedance values and/or structures, if necessary.

Package Dimensions



| Pin Description | |
|------------------------|--------|
| A, B, C, E, F, G, H, J | Ground |
| I | Input |
| D | Output |

Testing Environment



| Test Fixture & Values | |
|-----------------------|-------------------|
| Input | L1=22nH , C1=13pF |
| Output | L2=25nH , C2=18pF |
| Source/Load Impedance | 50 Ω |

Frequency Characteristics

Frequency Response

